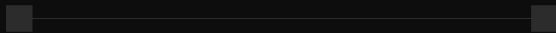
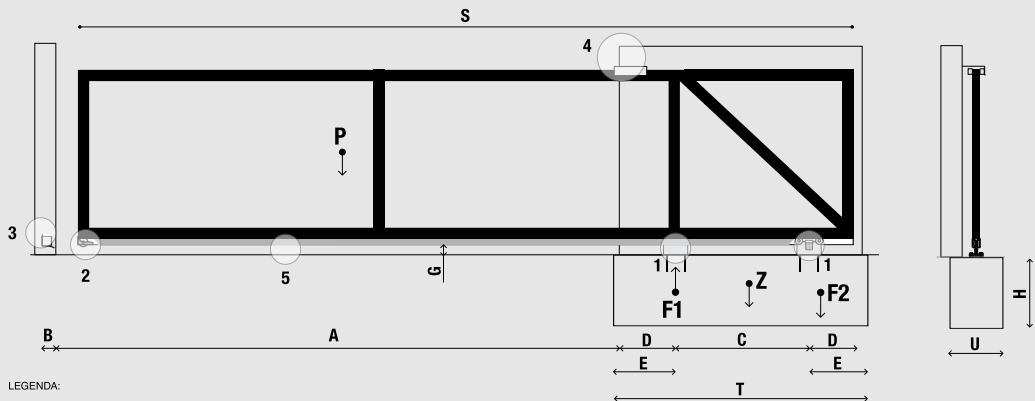


# FISA TEHNICA 900



[www.automatizaripentruporti.ro](http://www.automatizaripentruporti.ro)



LEGENDA:

- Pmax (kg): greutatea totala a portii
- A (m): deschiderea golii
- S (m): lungimea totala poarta
- C (m): distanta inter ax rola
- F1max (kg): sarcina maxima
- D (m): distanta necesara pentru ghidaj cu rulment
- Zmin (kg): greutatea minima a fundatiei
- TxHxU min (m): dimensiuni fundatiei
- F2 (kg): sarcina maxima
- B (m): distanta necesara pentru opritori

DIMENSIUNI			TxHxU min (m)	INCARCARE UNIFORMA			INCARCARE NEUNIFORMA		
A(m)	C(m)	S(m)		P max = 255 kg	Z min = 510 kg	P max fara greutatea sinei	P max = 190 kg	Z min = 675 kg	P max fara greutatea sinei
1.5	0.60	2.6	1.10x0.40x0.40			233			168
2	0.80	3.3	1.30x0.40x0.40			227			162
2.5	1.00	4.0	1.50x0.40x0.40			223			158
3	1.20	4.7	1.70x0.40x0.40			216			151
3.5	1.40	5.4	1.90x0.40x0.40			212			147
4	1.60	6.1	2.10x0.40x0.40			206			141
4.5	1.80	6.8	2.30x0.40x0.40			202			137

Valori constante : F1max (kg) 450 ; D (m) 0.195 ; B (m) 0.110 ; Gmin (m) 0.05 ; Emin (m) 0.25

**COD: 910S**

SISTEM  
ROLE



buc.

**COD: 920**

RULMENT CAPAT  
SINA



buc.

**COD: 930**

OPRITOR CAPAT  
CURSA



buc.

**COD: 222**

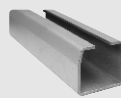
GHIDAJ SUPERIOR  
REGLABIL



buc.

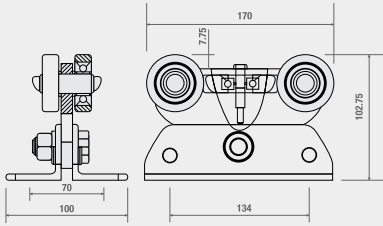
**COD: P53MZ**

SINA ZINCATA  
RAMFORSATA

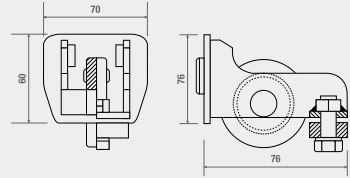


m

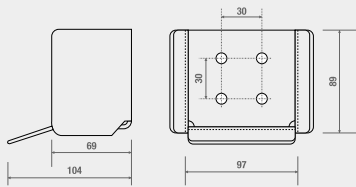
Portile autoportante permit deschiderea portilor astfel incat acestea sa nu atinga solul. In acest fel nu vor mai fi probleme cu gheata, pamantul adunat pe sina portii, etc. Sistemul de culisare pentru porti autoportante este ideal pentru a evita foarte multe probleme de intretinere a acestora. Acest tip de porti are un standard inalt de siguranta, fiind complet premontate. Lucrarile de fundatie sunt reduse, fara sine de culisare pe pardoseala, fara disfunctionalitati din cauza ghetii, zapezii sau murdariei colmatate. Deschiderea utilta pentru porti in consola poate sa fie intre 3 si 15 m iar automatizarile aferente ar fi intre 300 kg si 2200 kg.



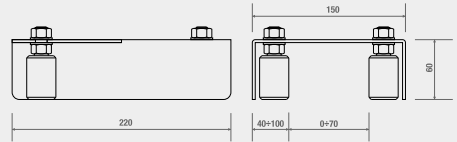
**COD: 910S**  
SISTEM ROLE



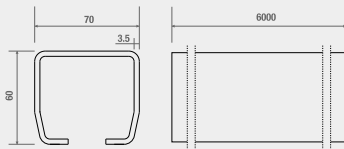
**COD: 920**  
RULMENT CAPAT SINA



**COD: 930**  
OPRITOR CAPAT CURSA



**COD: 222**  
GHIDAJ SUPERIOR REGLABIL



**COD: P53MZ**  
SINA ZINCATA RAMFORSATA